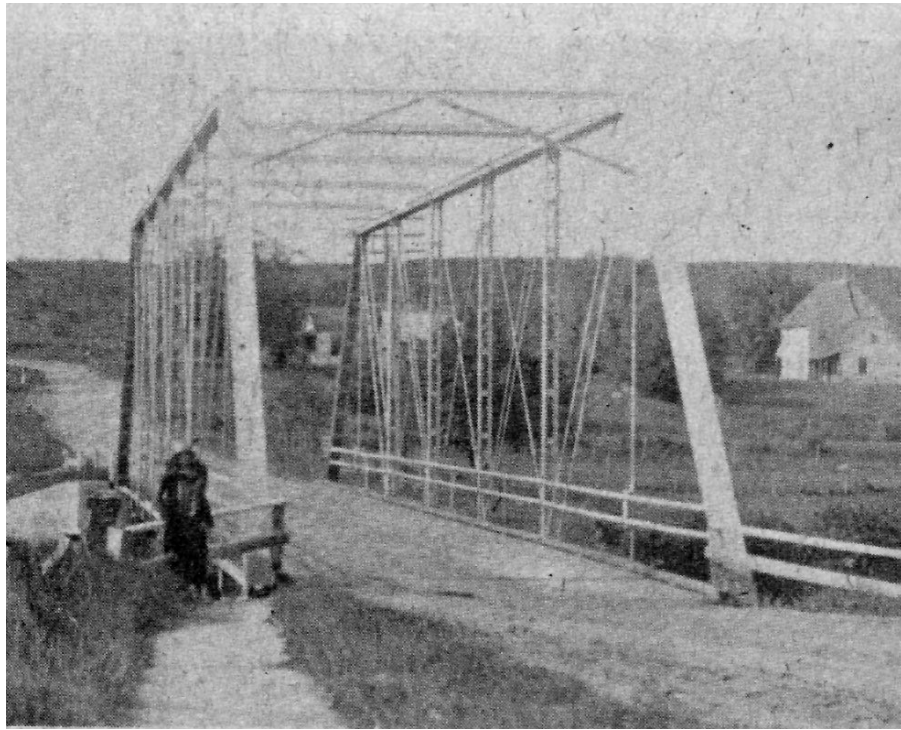


Peshtigo Times (Photo From 1924)



1924 Photo ----- This was the old Wagon Bridge, a replica of the first bridge, looking south over the Wausaukee River in Wausaukee. With wooden planks for a base, the rumble of traffic over this bridge could be heard all over town. This road named Division Street was also the main highway leading to the northern part of the State of Wisconsin. The Bridge was torn down after weight restrictions were placed on the structure.